



APPENDIX B

Ilisagvik College Relocation Program – Visioning Graphics

ILISAĠVIK COLLEGE RELOCATION PROGRAM VISIONING GRAPHICS

Strategic Planning Work Session
Barrow / Utqiagvik, Alaska
Work Session Summary

August 22- 23, 2017

Facilitation and Summary Prepared by:

ASCENT

601 W 5th Avenue, Suite 501
Anchorage, Alaska 99501
(907) 244-8669
www.ascentpgm.com



6525 17th Avenue NE
Seattle, Washington 98115
(206) 419-1510
www.colibrifacilitation.com

Funded by:



100 Stevenson Street
Barrow / Utqiagvik, Alaska 99723
(907) 852-3333
www.ilisagvik.edu

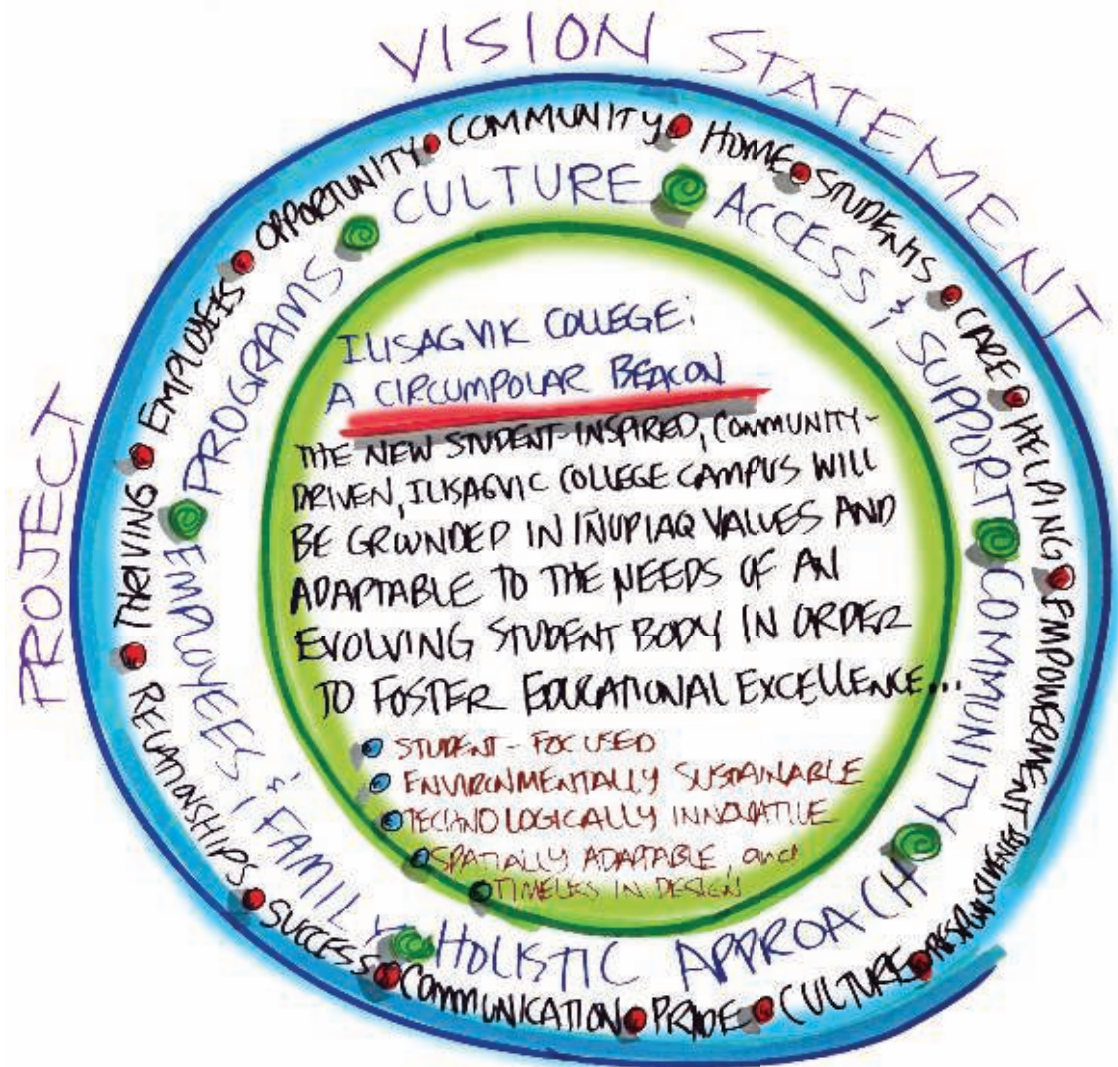
IĻISAĖVIK COLLEGE: A CIRCUMPOLAR BEACON

The new student-inspired, community-driven, IĻisaĖvik College campus will be grounded in IĻiupiaq values and adaptable to the needs of an evolving student body in order to foster educational excellence.

Drawing from our IĻiupiaq culture, our new facility will be:

- Student-Focused
- Environmentally Sustainable
- Technologically Innovative
- Spatially Adaptable, and
- Timeless in Design

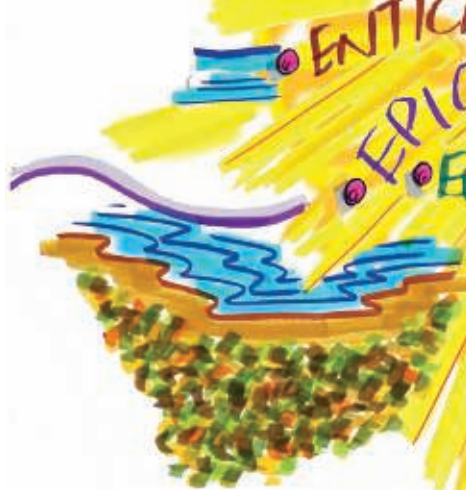
The new IĻisaĖvik College Campus will model best practices in Indigenous education and train our future leaders to drive global change.

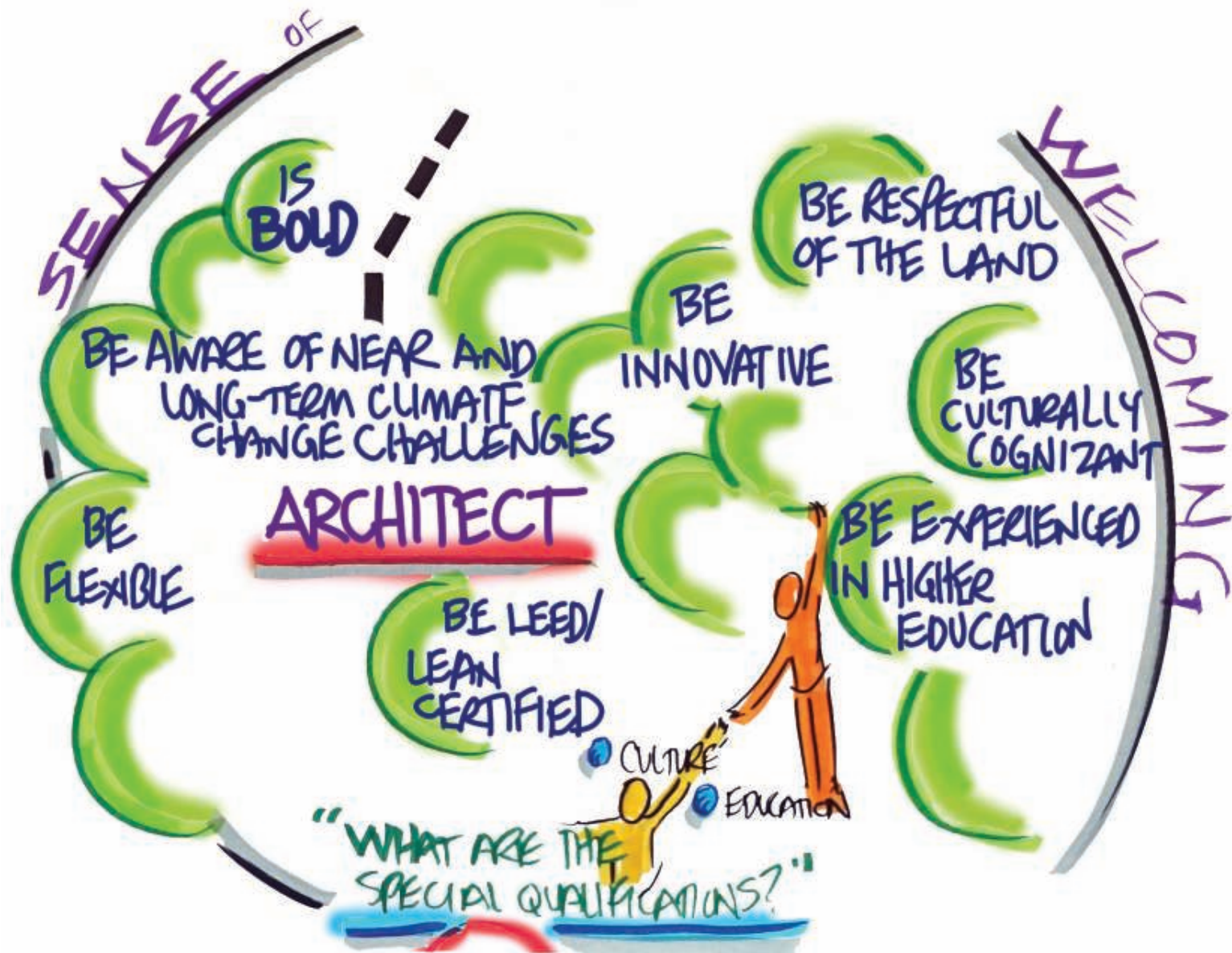


BEYOND
50
YEARS
OUR
VISION
FOR THE NEW
FACILITY



- CIRCUMPOLAR
- STUDENT FOCUSED
- BREATHABLE
- FLEXIBLE
- EDUCATIONAL EXCELLENCE
- TIMELESS
- MODERN
- HOLISTIC
- WELCOMING
- INŪPIAQ
- INCLUSIVE
- ENVIRONMENTALLY SUSTAINABLE
- ENTICING
- BEST MODEL
- EDGE/CUMBE
- EPIC
- EVOLUTIONARY
- EFFICIENT
- LIFE LONG LEARNING
- INDUSTRY DRIVEN







OUR FUTURE

STRATEGIC PLANNING
WORK SESSION
AUGUST 22, 2017

